

# FM-530 / MD-130 Series

# **MECHANICAL**

# **FUEL METER**

## Owner's Manual



## **STOP**

**DO NOT RETURN  
THIS PRODUCT  
TO THE STORE!**

Please contact GPI before returning any product. If you are missing parts or experience problems with your installation, our Customer Support Department will be happy to assist you.

GPI Customer Support  
800-835-0113 or  
316-686-7361



5252 East 36th Street North  
Wichita, KS USA 67220-3205  
TEL: 316-686-7361  
FAX: 316-686-6746

***GREAT PLAINS INDUSTRIES, INC.***

"A Great Plains Ventures Subsidiary"

[www.gpi.net](http://www.gpi.net)

**1-800-835-0113**

## TABLE OF CONTENTS

|                                 |   |
|---------------------------------|---|
| General Information .....       | 1 |
| Installation .....              | 1 |
| Operation .....                 | 2 |
| Calibration .....               | 2 |
| Maintenance .....               | 3 |
| Troubleshooting .....           | 4 |
| Specifications .....            | 4 |
| Illustrated Parts Drawing ..... | 5 |
| Parts and Service .....         | 6 |



Great Plains Industries, Inc. is a member of the Petroleum Equipment Institute.

## GENERAL INFORMATION

Congratulations on receiving your new meter. This manual should assist you in operating and maintaining your mechanical fuel meter. Please take a few moments to read these instructions before installing and operating your fuel meter. If you need assistance, contact the dealer from whom you purchased your meter. If you need further assistance, please call our Customer Service Department at 1-800-835-0113.

### Safety Instructions

Please read, understand, and follow the safety instructions given here. It is your responsibility to ensure that all equipment operators have access to adequate instructions concerning safe operation and maintenance.

1. This meter is designed for use only with thin viscosity petroleum fuels such as gasoline (up to 15% alcohol blends such as E15), diesel fuel (up to 20% biodiesel blends such as B20), biodiesel (B100) and kerosene.
2. Do not use this equipment for dispensing any fluids other than those for which it was designed. To do so may damage the meter and will void the warranty.

3. Observe precautions against fire or explosion when dispensing fuel. Do not operate the meter in the presence of any source of ignition including running or hot engines, lighted cigarettes, or gas or electric heaters.
4. Any components such as hose, nozzle, or pump added to your meter must be statically grounded and approved for use with petroleum fuels.
5. Avoid prolonged skin contact with petroleum fuels. Use protective goggles, gloves, and aprons in case of accidental splashing or spillage. Change saturated clothing and wash skin contact areas promptly with soap and water.

The FM-530 Series of Mechanical Fuel Meters are designed for the field measurement of thin viscosity petroleum fuels only and are intended for use with pump systems in the 5 to 30 GPM or 19 to 114 LPM flow range (not intended for gravity flow systems). Using mechanical gears, these meters translate flow data from a rotating disc into calibrated units which are indicated on the face of the meter. This meter is factory calibrated for diesel fuel. Field calibration feature is available for other fluids, see Calibration section.

## INSTALLATION

Before installing your meter, review the safety instructions given above. Examine your meter to make sure there are no visible signs of shipment damage. Plan your meter installation by reviewing the following procedures. Your system must be mounted on a vented tank. If the tank is unvented, your local dealer or distributor can supply a pressure cap.

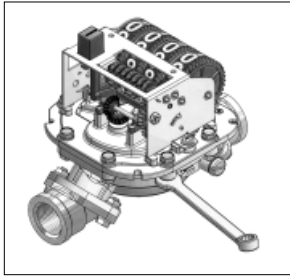
Prior to installation, determine the fitting angle desired and whether horizontal or vertical orientation is required.

### Rotate Fittings

To rotate inlet and/or outlet fittings, remove the two nuts and bolts which secure each fitting. Rotate the fitting to the desired orientation. Make sure the O-ring is fully seated. Tighten the nuts and bolts snugly.

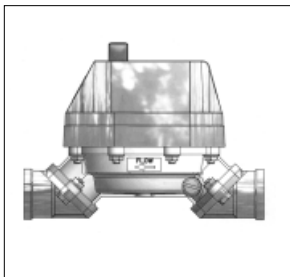
## Change Orientation

1. Remove the two Phillips head screws which secure the cover to the coverplate assembly.
2. Remove the eight pairs of nuts and bolts which hold the coverplate assembly to the housing. (Figure 1) Note the position of the reset button.



**Figure 1**

3. Rotate the coverplate assembly and counter to the desired orientation. Make sure the flow arrow in the housing points toward the outlet port. (Figure 2)



**Figure 2**

4. Make sure the housing O-ring is fully seated and firmly tighten the eight nuts and bolts which secure the coverplate assembly.
5. Place the reset button in position. Secure the cover to the coverplate assembly with the two Phillips head screws.

## Meter Installation

1. Remove protective plugs from the meter inlet and outlet ports.
2. Wrap threaded male connections with Teflon® tape or use a pipe sealant compound compatible with petroleum fuels. We recommend Lock-Tite thread

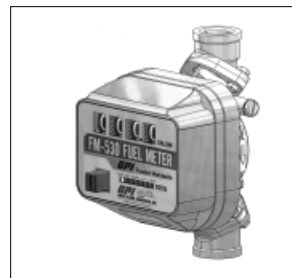
sealant at the inlet fitting in horizontal orientation.

3. Install the meter on the pump using an appropriately sized nipple. The meter's flow path is marked on the housing exterior with an arrow pointing toward the outlet port.
4. Install other system components on the meter and tighten snugly.

## OPERATION

Before use, review the safety instructions given above. Visually check the meter to ensure it is securely connected to other system components and there is no leakage. Promptly wipe spilled fuel from the meter's exterior and other system components.

The large meter display represents the Batch Total for each fuel delivery. Before dispensing, reset the Batch Total to zero by pushing the reset button. (Figure 3)



**Figure 3**

The small display represents the Cumulative Total of all fuel deliveries and cannot be reset.

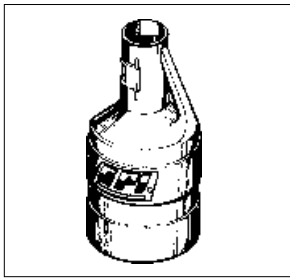
## CALIBRATION

The meter is accurately calibrated at the factory for use with diesel fuel. Due to differences in viscosity and flowrates, the meter may require recalibration to measure other fuels or to adjust for inaccuracies.

1. Purge air from the meter and fuel system by dispensing fuel into a container until a full flow occurs. Close the nozzle.

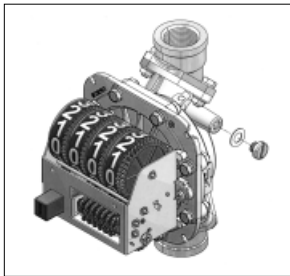
2. Reset the meter counter to zero by pressing the reset button. (Figure 3)
3. Pump into a graduated calibration container to a specified quantity. For the greatest accuracy, be sure the container is placed on a level surface and a consistent flow rate is used. When topping off the calibration container, use a quick-open and quick-close method until the mark is reached.

NOTE: Your GPI dealer can supply a calibration container designed for this purpose. (Figure 4)



**Figure 4**

4. Compare the meter display to the quantity in the container. If the display does not register the quantity on the container, adjust the meter by performing the following:
  - a. Gain access to the recessed calibration screw by turning the calibration screw cover and seal counterclockwise. Remove the cover and nylon washer. (Figure 5)



**Figure 5**

- b. If the meter registered **less** than the quantity in the container, turn the calibration screw **clockwise**. If the meter display read **more** than the amount in the container, turn the calibration screw **counterclockwise**.
5. Empty the calibration container and repeat steps 2 to 4 until the meter registers the quantity in the container.
6. Install the nylon washer and calibration screw cover.

## MAINTENANCE

The meter's strainer should be cleaned at regular intervals, especially when low flow is detected.

### **Clean or Replace Strainer**

1. Remove the nuts and bolts at the inlet fitting. Remove the fitting, O-ring, and strainer.
2. Using a fine brush, clean the strainer. Replace the strainer as necessary.
3. Wipe clean the inlet, housing, and O-ring groove. Coat the O-ring with oil or light grease. Make sure the O-ring is fully seated. Replace the strainer.
4. Position the inlet fitting in the desired orientation and tighten the nuts and bolts until snug.

## TROUBLESHOOTING

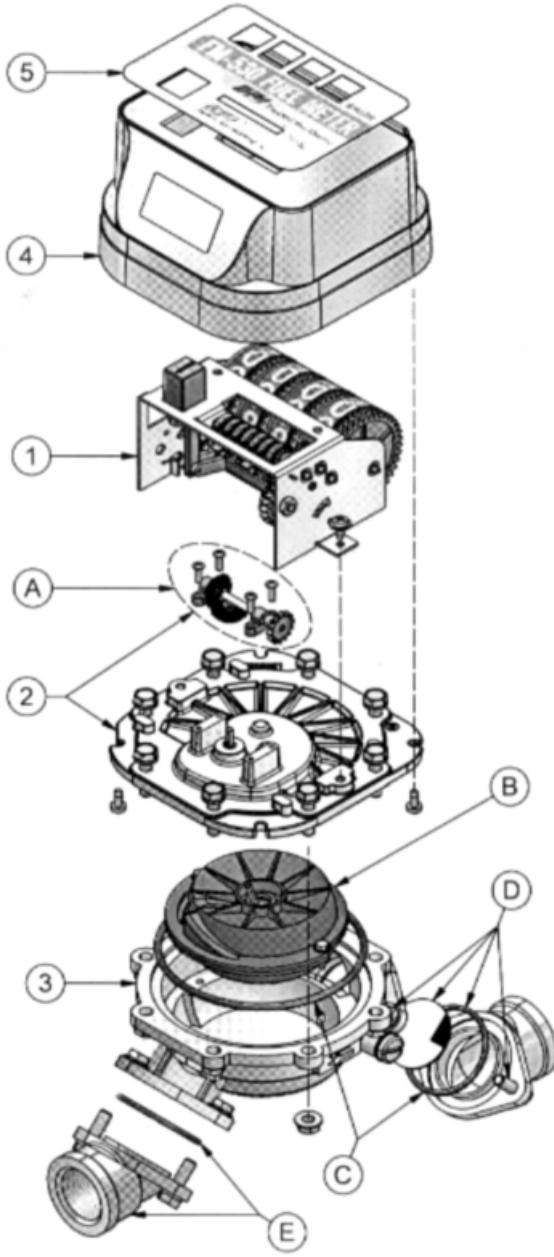
| Symptom   | Probable Cause  | Corrective Action   |
|---|---|---|
| A. Meter counter does not operate. (Normal fuel delivery)   | <ol style="list-style-type: none"> <li>1. Broken counter assembly.</li> <li>2. Foreign material in counter assembly or nutator assembly.</li> <li>3. Broken nutator disc pin or defective nutator assembly.</li> <li>4. Jammed or broken gear train.</li> </ol> | <p>Replace counter.</p> <p>Remove and clean counter assembly or nutator assembly.</p> <p>Install new nutator assembly.</p> <p>Contact GPI Customer Service.</p>   |
| B. Meter counter does not operate. (Little or no fuel flow) | <ol style="list-style-type: none"> <li>1. Clogged strainer in meter.</li> <li>2. Other system components malfunctioning.</li> <li>3. Foreign material in nutator assembly.</li> </ol>   | <p>Clean or replace strainer.</p> <p>Check all system components from tank to nozzle for clogs and/or malfunctions. Repair as necessary.</p> <p>Remove and clean nutator assembly.</p>  |
| C. Fuel leakage.  | <ol style="list-style-type: none"> <li>1. Leakage at counter drive shaft.</li> <li>2. Leakage between coverplate and housing.</li> <li>3. Leakage at fittings.</li> <li>4. Leakage at threads.</li> </ol>   | <p>Replace coverplate assembly.</p> <p>Remove coverplate and inspect for damaged, missing or incorrectly seated seal. Replace as required.</p> <p>Remove fittings and inspect for damaged, missing or incorrectly seated seals. Replace as required.</p> <p>Remove meter and reseal all threaded connections with Teflon® tape or pipe thread sealing compound approved for use with flammable liquids.</p> |

## SPECIFICATIONS

|                            | <b>Gallon Models</b> | <b>Litre Models</b> |
|----------------------------|----------------------|---------------------|
| Unit of Measure            | U.S. Gallon          | Litre               |
| Flow Range                 | 5 to 30 GPM          | 19 to 114 LPM       |
| Typical Accuracy           | ± 2%                 | ± 2%                |
| Type                       | Nutating Disc        | Nutating Disc       |
| Housing Material           | Aluminum             | Aluminum            |
| Maximum Working Pressure   | 50 PSIG              | 3.4 bar             |
| Inlet/Outlet Fitting Size  | 3/4", 1" or 1-1/2"   | 3/4", 1" or 1-1/2"  |
| Threads                    | NPT                  | NPT or BSPP         |
| Maximum Batch Total        | 999.9                | 9999                |
| Maximum Cumulative Total   | 999,999.9            | 9,999,999           |
| Approximate Ship Weight    | 6.0 lbs.             | 2.7 kg              |
| Maximum Dimensions: Width: | 8.7 inches           | 22 cm               |
| Height:                    | 5.9 inches           | 15 cm               |
| Depth:                     | 5.7 inches           | 14.5 cm             |

Note: Accuracy is factory calibrated using diesel fuel. Field Calibration is available on all models.

# ILLUSTRATED PARTS DRAWING



## ILLUSTRATED PARTS LIST

| Item No.         | Part No.  | Description                           | No. Req'd. |
|------------------|-----------|---------------------------------------|------------|
| 1                | 126514-05 | Counter Assembly, Gallons .....       | 1          |
|                  | 126514-06 | Counter Assembly, Litres .....        | 1          |
| 2                | 126514-07 | Coverplate Assembly, Gallons .....    | 1          |
|                  | 126514-08 | Coverplate Assembly, Litres .....     | 1          |
| 3                | 126010-1  | Housing .....                         | 1          |
| 4                | 126013-11 | Top Cover .....                       | 1          |
| 5                | 12620239  | Decal (Gallon) .....                  | 1          |
|                  | 12620240  | Decal (Litre).....                    | 1          |
| items not shown: |           |                                       |            |
|                  | 111014-3  | Calibration Screw .....               | 1          |
|                  | 111026-1  | Seal, Calibration Screw .....         | 1          |
|                  | 111039-2  | Cover, Calibration Screw .....        | 1          |
|                  | 904006-16 | Washer, Calibration Screw Cover ..... | 1          |

## Kits and Accessories

|          |           |   |
|----------|-----------|---|
| <b>A</b> | 126514-03 | Gear Assembly Kit, Gallons                                      |
|          | 126514-04 | Gear Assembly Kit, Litres                                       |
| <b>B</b> | 126503-1  | Nutator Assembly Kit  |
| <b>C</b> | 126509-1  | Seal Kit (Housing O-Ring, Fitting O-Rings)                      |
| <b>D</b> | 126512-1  | Hardware Kit (Fitting O-Rings, Strainer, Screws, Nuts)          |
| <b>E</b> | 126501-1  | Fitting Kit for 3/4-inch NPT (2 Fittings, 2 Fitting O-Rings)    |
|          | 126501-2  | Fitting Kit for 3/4-inch BSPP (2 Fittings, 2 Fitting O-Rings)   |
|          | 126501-3  | Fitting Kit for 1-inch NPT (2 Fittings, 2 Fitting O-Rings)      |
|          | 126501-4  | Fitting Kit for 1-inch BSPP (2 Fittings, 2 Fitting O-Rings)     |
|          | 126501-5  | Fitting Kit for 1-1/2-inch NPT (2 Fittings, 2 Fitting O-Rings)  |
|          | 126501-6  | Fitting Kit for 1-1/2-inch BSPP (2 Fittings, 2 Fitting O-Rings) |

## PARTS AND SERVICE

For warranty consideration, parts, or other service information, contact your local distributor. If you need further assistance, please contact GPI Customer Service Department in Wichita, Kansas during normal business hours at 1-800-835-0113.

To obtain prompt, efficient service, always be prepared with 1.) the model number of your meter, 2.) the manufacturing date located on the back of the meter, and 3.) specific information, as necessary, obtained from the Illustrated Parts List. For warranty work always be prepared with proof of purchase date.

Please contact GPI before returning any parts. It may be possible to diagnose the

trouble and identify needed parts without returning parts. GPI can also inform you of any special handling requirements you will need to follow covering the transportation and handling of fuel transfer equipment. Before packing for shipment, make sure the meter is thoroughly drained and free of fuel and vapors.

**CAUTION!** Do not return meters or parts without specific authority from the GPI Customer Service Department. Due to strict regulations governing shipment of flammable liquids, meters may be refused and returned to the sender if sent without authorization.

## Limited Warranty Policy

Great Plains Industries, Inc. 5252 E. 36<sup>th</sup> Street North, Wichita, KS USA 67220-3205, hereby provides a limited warranty against defects in material and workmanship on all products manufactured by Great Plains Industries, Inc. This product includes a 2 year warranty. Manufacturer's sole obligation under the foregoing warranties will be limited to either, at Manufacturer's option, replacing or repairing defective Goods (subject to limitations hereinafter provided) or refunding the purchase price for such Goods theretofore paid by the Buyer, and Buyer's exclusive remedy for breach of any such warranties will be enforcement of such obligations of Manufacturer. The warranty shall extend to the purchaser of this product and to any person to whom such product is transferred during the warranty period.

The warranty period shall begin on the date of manufacture or on the date of purchase with an original sales receipt. This warranty shall not apply if:

- A. the product has been altered or modified outside the warrantor's duly appointed representative;
- B. the product has been subjected to neglect, misuse, abuse or damage or has been installed or operated other than in accordance with the manufacturer's operating instructions.

To make a claim against this warranty, contact the GPI Customer Service Department at 316-686-7361 or 800-835-0113. Or by mail at:

Great Plains Industries, Inc.  
5252 E. 36<sup>th</sup> St. North  
Wichita, KS, USA 67220-3205

The company shall, notify the customer to either send the product, transportation prepaid, to the company at its office in Wichita, Kansas, or to a duly authorized service center. The company shall perform all obligations imposed on it by the terms of this warranty within 60 days of receipt of the defective product.

**GREAT PLAINS INDUSTRIES, INC., EXCLUDES LIABILITY UNDER THIS WARRANTY FOR DIRECT, INDIRECT, INCIDENTAL AND CONSEQUENTIAL DAMAGES INCURRED IN THE USE OR LOSS OF USE OF THE PRODUCT WARRANTED HEREUNDER.**

The company herewith expressly disclaims any warranty of merchantability or fitness for any particular purpose other than for which it was designed.

This warranty gives you specific rights and you may also have other rights which vary from U.S. state to U.S. state.

Note: In compliance with MAGNUSON MOSS CONSUMER WARRANTY ACT – Part 702 (governs the resale availability of the warranty terms).



5252 East 36th Street North  
Wichita, KS USA 67220-3205  
TEL: 316-686-7361  
FAX: 316-686-6746

***GREAT PLAINS INDUSTRIES, INC.***

*"A Great Plains Ventures Subsidiary"*

[www.gpi.net](http://www.gpi.net)

**1-800-835-0113**

GPI is a registered trademark of Great Plains Industries, Inc.

© 2006 GREAT PLAINS INDUSTRIES, INC., Wichita, KS.

Printed in U.S.A.